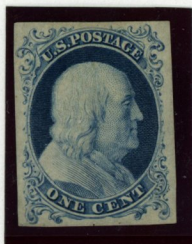




## Fakes and Forgeries

from the Reference Collection of The Philatelic Foundation

1851 ISSUE



**1¢ Blue, Type I, Government Reprint, Proof on stamp paper**  
**Fraudulently gummed in the hopes of convincing someone that this is Scott # 5.**



**1¢ Blue, Type II**  
**Outer lines at top and bottom scraped away to resemble the Type III.**



**1¢ Blue, Type V**  
**Top row example from plate 5 with all perforations trimmed away to resemble Type III.**



**1¢ Blue, Type IV, Horizontal pair with counterfeit rouletting.**





## Fakes and Forgeries

from the Reference Collection of The Philatelic Foundation

1851 ISSUE



**5¢ Brown, Type II with all perforations trimmed away to resemble the imperforate 5¢, Type I (Scott # 12)**



**10¢ Green, Type I  
Perforated stamp with all  
perforations trimmed  
away to resemble imperf.**



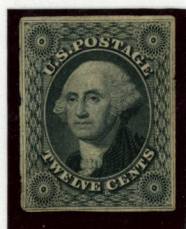
**10¢ Green, Type V  
Perforated stamp with all  
perforations trimmed  
away to resemble Type III.**



**10¢ Green, Type V  
Bottom margin repaired  
and painted in to resemble  
the scarce Type IV.**



**12¢ Black, Perforated  
with all perforations  
timmed away and  
rebacked.**



**12¢ Black, Reprint  
Plate Proof on Card  
Thinned down to resemble  
Scott # 17**



**12¢ Black  
Manuscript cancellation  
removed and counterfeit  
cancellation added.  
P F C # 212,629**





## Fakes and Forgeries

from the Reference Collection of The Philatelic Foundation

1851 ISSUE



3¢ Dull Red, fraudulent vertical bisect, tied by counterfeit cancellation.



3¢ Dull Red tied by Philadelphia, Pa. postmark to cover with counterfeit Carrier stamp at top right, tied by fraudulent grid cancellation.





## Fakes and Forgeries

from the Reference Collection of The Philatelic Foundation

1851 ISSUE



10¢ Green, Type III, tied by San Francisco postmark to cover with counterfeit Noisy Carrier marking at bottom left of cover.



12¢ Black, Diagonal Bisect, tied by counterfeit New York STEAM/SHIP marking to cover with counterfeit VIA NICARAGUA marking at bottom left of cover.