



## Fakes and Forgeries

from the Reference Collection of The Philatelic Foundation

### CONFEDERATE STATES OF AMERICA

#### GENERAL ISSUES



**Genuine Stamp**  
**Non-Contemporary**  
**Cancellation**



**Birmingham Counterfeit**  
**Incorrect lower**  
**ornaments**



**Springfield Facsimile**  
**Slight Differences**



**Springfield Facsimile**  
**Slight Differences**



**Springfield Facsimile**  
**Fraudulent**  
**Cancellation**



**Genuine Stamp**  
**Counterfeit Cancellation**



**Birmingham Counterfeit**  
**No Periods after "CSA"**





## Fakes and Forgeries

from the Reference Collection of The Philatelic Foundation

### CONFEDERATE STATES OF AMERICA GENERAL ISSUES



5¢ Blue, De La Rue  
New York Counterfeit  
Greenish Shade



5¢ Blue, De La Rue  
Fraudulently  
Perforated 12.5



5¢ Blue, Archer & Daly  
Fraudulently  
Perforated 14



2¢ Brown Red  
Counterfeit Cork  
Cancellation



2¢ Brown Red  
Fraudulent Perforations



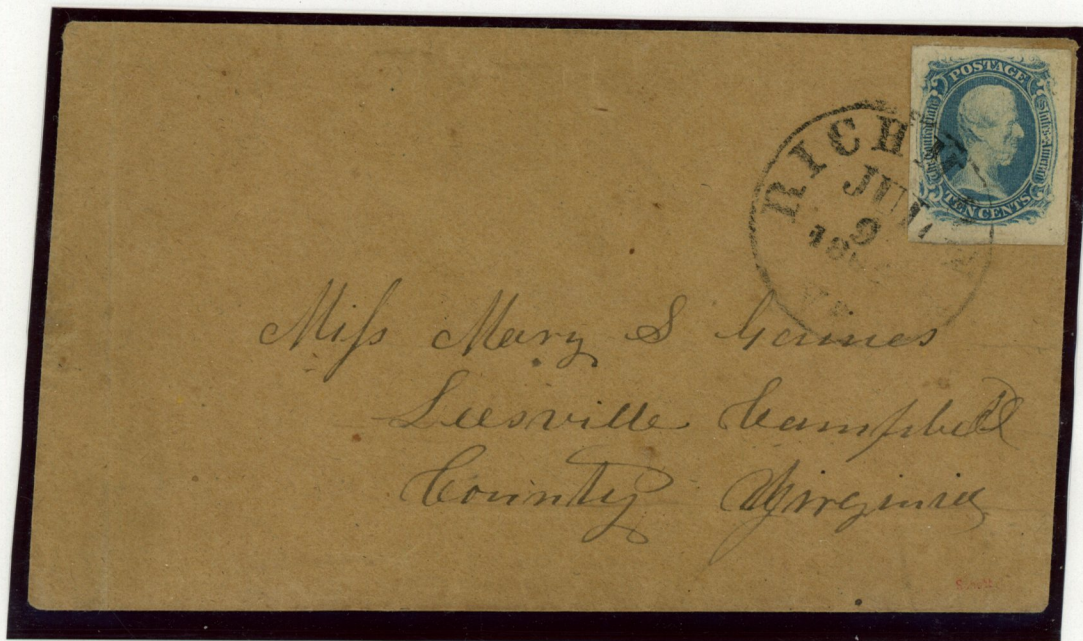


## Fakes and Forgeries

from the Reference Collection of The Philatelic Foundation

### CONFEDERATE STATES OF AMERICA

GENERAL ISSUES



**"T-E-N" Cent Blue (Sperati)**

**Telltale Colorless Flaws Covered Over**

**Tied by Counterfeit Richmond Postmark (Not Made by Sperati)**



**10¢ Blue, Scott # 11**  
**Fraudulent Frameline**  
**Between Stamps**



**10¢ Blue, Scott # 11**  
**Fraudulently Perforated 14**  
**Should be 12.5 and Rough**



**20¢ Green, Scott # 13**  
**Counterfeit Richmond, Va.**  
**Cancellation**